

wholesales pink pu leather jewelry box jewelry packaging box plastic bracelet box stocks

Product description:

product name	long bracelet box
Material	pu leather + microfiber + plastic
Dimension	customize
Color	customize
MOQ	500pcs
Logo	It can be printed as your design
Sample	Available
OEM / ODM	To offer
Place of origin	Guangdong, China (mainland)

Product details:









Other products that may interest you:



Jewelry display set



Necklace stand



Jewelry display stand



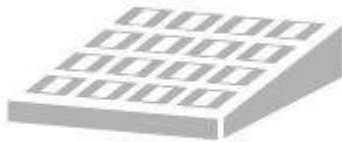
Jewelry paper bag



Jewelry pouch



Jewelry Roll bag



Jewelry Tray

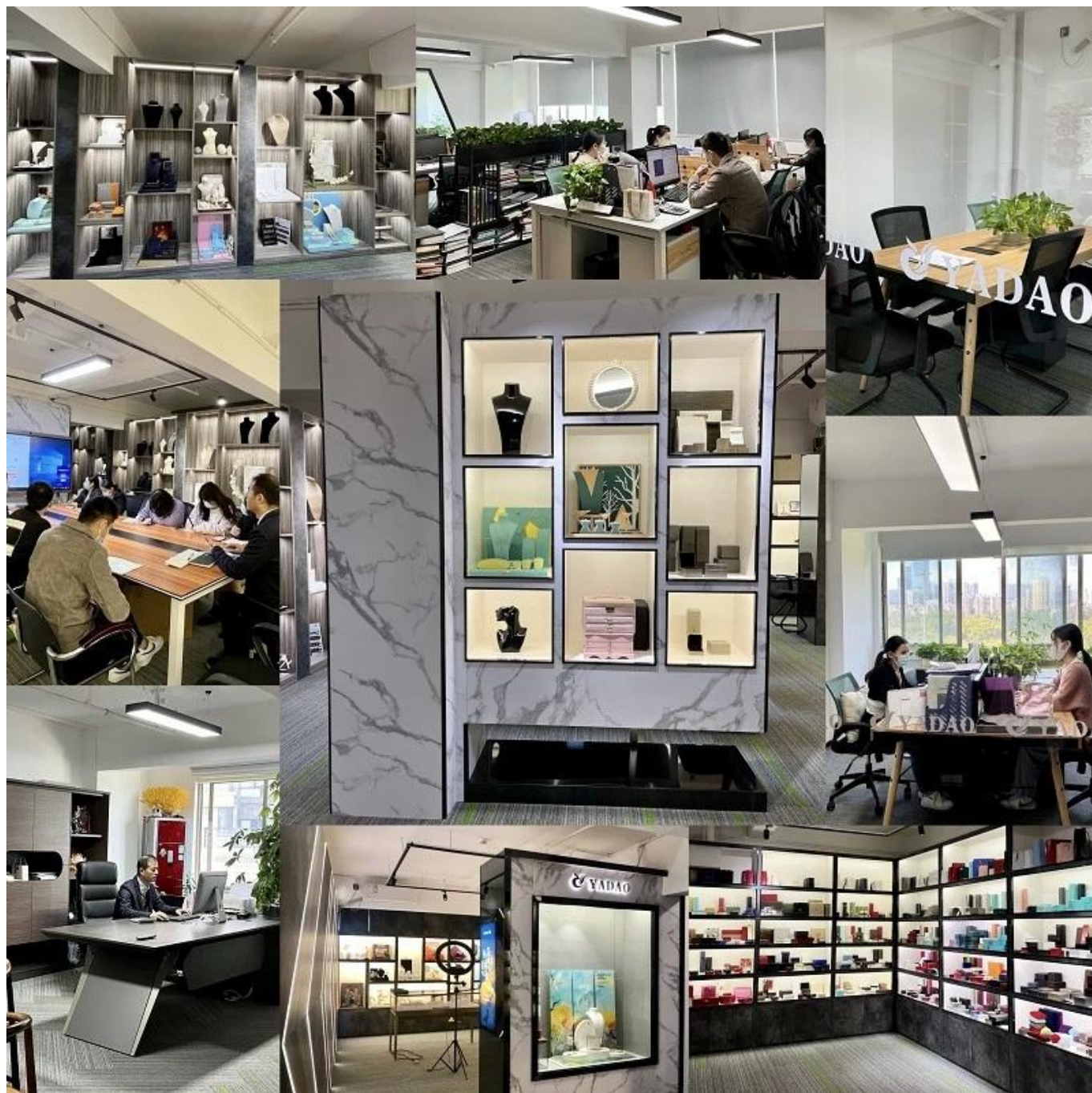


Jewelry Box



Jewelry Mirror

Environment:



Our exhibition □

2023 Hongkong international jewellery exhibition show



2019 Hongkong international jewellery show



2018 Hongkong international jewellery show



2017 Hongkong international jewellery show



Productive process:

Production Process



Polishing



Cutting



Materials



Assembling



Painting



Gluing



Packing



QC

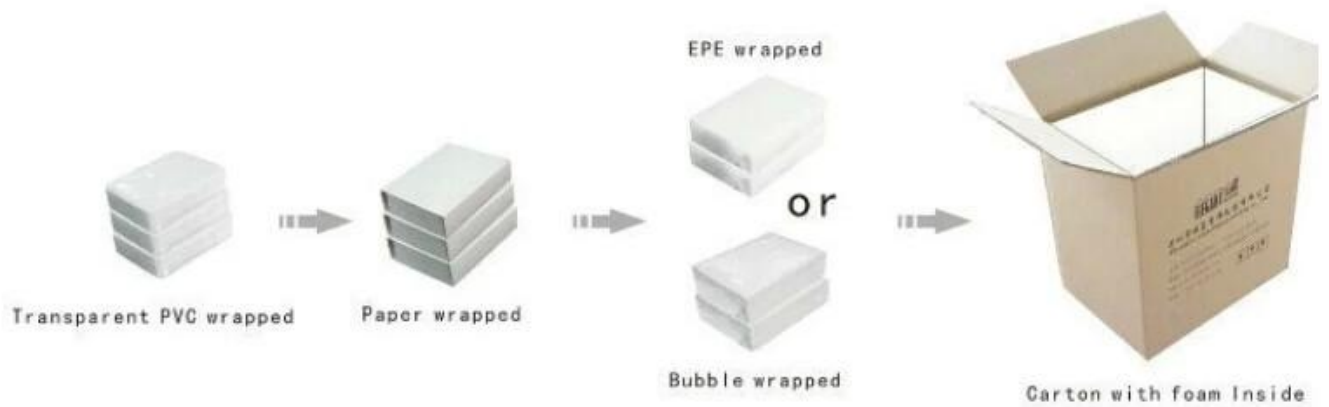


Wrapping

Box production process



Packaging and delivery □



Shipment:



certificate:



Cooperation partners:



FAQ

Q1. What is your product range?

1. Jewelry display --- Earrings / necklace / pendant / bracelet / bracelet / display stand
2. Trays for jewelry
3. Jewelry sets
4. jewelry box --- paper box / plastic box / wooden box / velvet box
5. Packaging --- Jewelry bags / Paper gift bags

Q2. Are you a direct manufacturer?

Yes. Since 2003 we have been specialized in jewelry and packaging displays for over 10 years.

Q3. Do you have items in stock to sell?

No. We customize. This means that all the details --- size, material, color, quantity, design, logo --- will be finished following your ideas.

Q4. Do you inspect the finished products?

Yes. Each phase of production and finished products will be carried out by the quality control department before shipment.

We are always ready to be your loyal driver for jewelry displays!

Send your request now!

The best solutions and high quality items will be offered. * ^ _ ^ *