

□□□□□□□□□□□□□□□□ □□□□□□□□□□□□□□□□ □□□□□□□□□□

□□□□□□□□□□□□□□□□-

□□□□□□□□□□	□□□□□□□□
□□□□□	□□□□□□□□□□□□□□□□ □□□□□□□□□□
□□□□□□□□	□□□□□□□□
□□	□□□□□□□□
□□□□□□□□□□□□	20 □□□□
□□□□□	□□□□□□□□□□□□□□□□□□□□□□□□
□□□□□□□□	□□□□□□
OEM/ODM	□□□□
□□□□□□□□□□□□	□□□□□□□□ □□□ (□□□□)

□□□□□□□□□□□□□□□□:











□□□□□□□□□□ □□□□□□□□□□□□□□□□:



Jewelry display set

The icon depicts a jewelry display set, showing a necklace on a bust, a rectangular display case, and a small rectangular box.

Necklace stand

The icon shows a necklace stand, which is a bust-like form used to display necklaces.



Jewelry display stand



Jewelry paper bag



Jewelry pouch



Jewelry Roll bag



Jewelry Tray

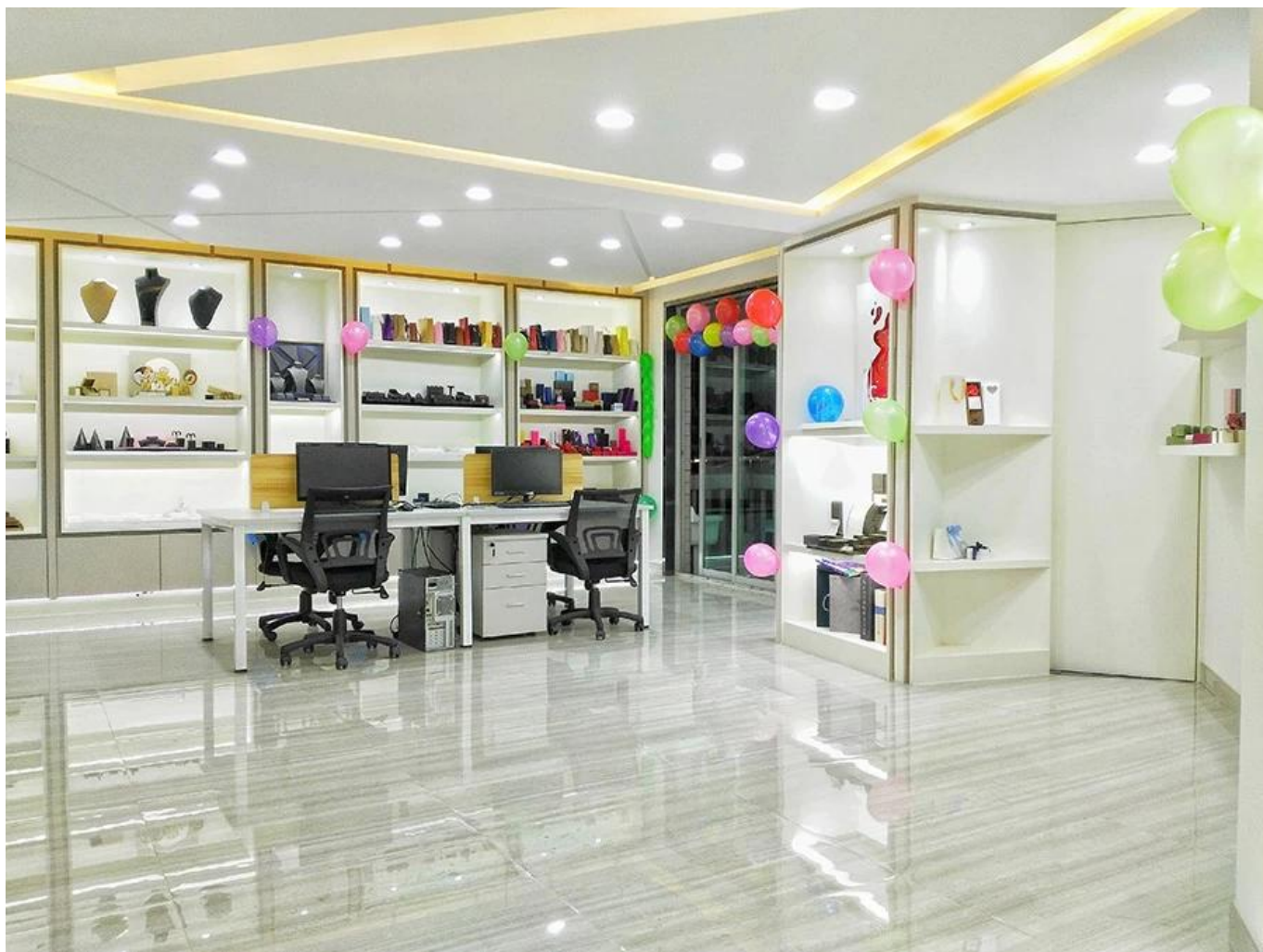


Jewelry Box



Jewelry Mirror

:



□□□□□□□□□□□□□□□□



# 2019 Hongkong international jewellery show



# 2018 Hongkong international jewellery show











# Production Process



**Polishing**



**Cutting**



**Materials**



**Assembling**



**Painting**



**Gluing**



**Packing**



**QC**



**Wrapping**





# Goods Packaging



Jewelry Box



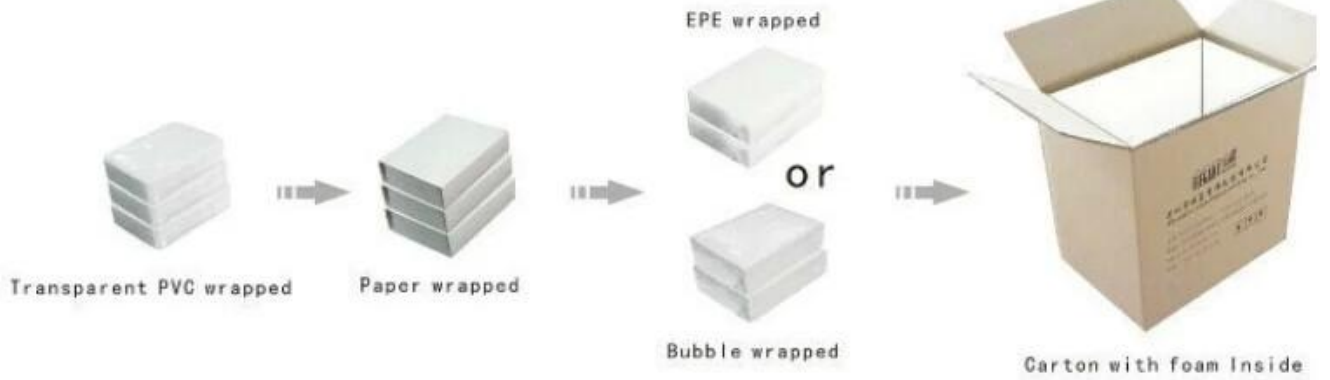
Jewelry Display



Jewelry Pouch



Paper Bag



□□□□□□□□:



□□□□□□□□:









